

Keysight Technologies

6060B and 6063B Single-Input 250 to 300 W Electronic Loads, GPIB

Maximize throughput with real-life loading conditions

- Cost-effective for single input applications
- Convenient optional front panel input connection

Data Sheet



The 6060B and 6063B each provides one load input. This is more convenient for single input applications than a mainframe product.

These electronic loads are particularly suited for the lab bench. Entering commands manually using the front panel keypad is simpler because the channel does not need to be specified, as in a mainframe configuration. The keypad entry is further simplified because these products do not have the downloadable LIST feature of the N3300A Series, which helps to maximize production throughput. Extensive protection is included to help protect your valuable prototypes under test. This includes overvoltage, overcurrent, overtemperature, overpower, and reverse polarity.

These loads are suitable for manufacturing test systems where maximizing speed is not critical. They use industry standard SCPI instructions, and also have VXIplug&play drivers to simplify system design. For the greatest speed and accuracy in programming and measurement, see the N3300A series of DC electronic loads.

Specifications

Specifications <i>(at 25 °C ± 5 °C unless otherwise specified)</i>	6060B	6063B
DC Input ratings		
Current	0 to 60 A	0 to 10 A
Voltage	3 to 60 V	3 to 240 V
Maximum power (at 40° C)	300 W	250 W
Constant current mode		
Ranges	0 to 6 A, 0 to 60 A	0 to 1 A, 0 to 10 A
Accuracy	0.1% ± 75 mA	0.15% ± 10 mA
Regulation	10 mV	8 mA
Constant voltage mode		
Accuracy	0.1% ± 50 mV	0.12% ± 120 mV
Regulation (w/remote sense)	10 mV	10 mV
Constant resistance mode		
Ranges	0.033 to 1.0 Ω 1 to 1,000 Ω 10 to 10,000 Ω	0.20 to 24.0 Ω 24 to 10,000 Ω 240 to 50,000 Ω
Accuracy	1 Ω: 0.8% ± 8 mΩ (with ≥ 6 A at input) 1 KΩ: 0.3% ± 8 mΩ (with ≥ 6 V at input) 10 KΩ: 0.3% ± 8 mΩ (with ≥ 6 V at input)	24 Ω: 0.8% ± 200 mΩ (with ≥ 1 A at input) 10 KΩ: 0.3% ± 0.3 mΩ (with ≥ 24 V at input) 50 KΩ: 0.3% ± 0.3 mΩ (with ≥ 24 V at input)
Transient generator		
Frequency range	0.25 Hz to 10 kHz	0.25 Hz to 10 kHz
Accuracy	3%	3%
Duty cycle range	3 to 97% (0.25 Hz to 1 kHz) 6 to 94% (1 to 10 kHz)	3 to 97% (0.25 Hz to 1 kHz) 6 to 94% (1 to 10 kHz)
Accuracy	6% of setting ± 2%	6% of setting ± 2%
Current level high range	0 to 60 A	0 to 10 A
Accuracy	0.1% ± 350 mA	0.18% ± 50 mA
Current low level range	0 to 6 A	0 to 1 A
Accuracy	0.1% ± 80 mA	0.18% ± 13 mA
Voltage level	0 to 60 V	0 to 240 V
Voltage level accuracy	0.1% ± 300 mV	0.15% ± 1.1 V
Readback accuracy		
Current	0.05% ± 65 mA	0.12% ± 10 mA
Voltage	± (0.05% + 45 mV)	± (0.1% + 150 mV)
Ripple and noise (20 Hz to 10 MHz noise)		
Current	4 mA rms 40 mA peak-to-peak	1 mA rms 10 mA peak-to-peak
Voltage	6 mV rms	6 mV rms

Specifications, continued

Supplemental characteristics		
<i>(Non-warranted characteristics determined by design and useful in applying the product)</i>		
	6060B	6063B
Constant current mode		
Resolution	60 A range: 16 mA 6 A range: 1.6 mA	10 A range: 2.6 mA 1 A range: 0.26 mA
Temperature coefficient	100 ppm/°C ± 5 mA/°C	150 ppm/°C ± 1 mA/°C
Constant voltage mode		
Resolution	16 mV	64 mV
Temperature coefficient	100 ppm/°C ± 5 mV/°C	120 ppm/°C ± 10 mV/°C
Constant resistance mode		
Resolution	1 Ω : 0.27 mΩ 1 KΩ: 0.27 ms 10 KΩ: 0.027 ms	24 Ω: 6 mΩ 10 KΩ: 0.011 ms 50 KΩ: 0.001 ms
Temperature coefficient	1 Ω: 800 ppm/°C ± 0.4 mΩ/°C 1 KΩ: 300 ppm/°C ± 0.6 ms/°C 10 KΩ: 300 ppm/°C ± 0.6 ms/°C	24 Ω: 800 ppm/°C ± 10 mΩ/°C 10 KΩ: 300 ppm/°C ± 0.03 ms/°C 50 KΩ: 300 ppm/°C ± 0.03 ms/°C
Transient generator		
Frequency range	0.25 Hz to 10 kHz	0.25 Hz to 10 kHz
Resolution	4% or less	4% or less
Duty cycle range	3 to 97% (0.25 Hz to 1 kHz) 6 to 94% (1 to 10 kHz)	3 to 97% (0.25 Hz to 1 kHz) 6 to 94% (1 to 10 kHz)
Resolution	4%	4%
Current level high range	60 A range:	10 A range:
Resolution	260 mA	43 mA
Current low level range	6 A range:	1 A range:
Resolution	26 mA	4 mA
Current temperature coefficient	100 ppm/°C ± 7 mA/°C	180 ppm/°C ± 1.2 mA/°C
Voltage level resolution	260 mV	1 V
Voltage temperature coefficient	150 ppm/°C ± 5 mV/°C	120 ppm/°C ± 10 mV/°C
Programmable slew rate	60 A range: 1 A/ms to 5 A/μs 6 A range: 0.1 A/ms to 0.5 A/μs	10 A range: 0.17 A/ms to 0.83 A/μs 1 A range: 17 A/ms to 83 A/ms
Rise/fall time	12 μs to 8 ms	16 μs to 8 ms
Analog programming bandwidth	10 kHz (–3 dB frequency)	10 kHz (–3 dB frequency)
Analog programming accuracy		
Current (low range)	4.5% ± 75 mA	3% ± 8 mA
Current (high range)	4.5% ± 250 mA	3% ± 20 mA
Temperature coefficient	100 ppm/°C ± 6 mA/°C	150 ppm/°C ± 1 mA/°C
Voltage	0.8% ± 200 mV	0.5% ± 150 mV
Temperature coefficient	100 ppm/°C ± 1 mV/°C	120 ppm/°C ± 10 mV/°C
Analog programming voltage	0 to 10 V	0 to 10 V
Readback specifications		
Current readback resolution	17 mA (via GPIB) 20 mA (front panel)	2.7 mA (via GPIB) 10 mA (front panel)
Temperature coefficient	50 ppm/°C ± 5 mA/°C	100 ppm/°C ± 1 mA/°C
Voltage readback resolution	17 mV (via GPIB) 20 mV (front panel)	67 mV (via GPIB) 100 mV (front panel)
Temperature coefficient	50 ppm/°C ± 1.2 mV/°C	100 ppm/°C ± 8 mV/°C

Notes:

- Operating temperature range is 0° to 55 °C. All specifications apply for 25 °C ± 5 °C, except as noted.
- Maximum continuous power available is derated linearly from 40 °C to 75% of maximum at 55 °C.
- DC current accuracy specifications apply 30 seconds after input is applied.

Specifications, continued

Supplemental characteristics		
<i>(Non-warranted characteristics determined by design and useful in applying the product)</i>		
	6060B	6063B
Analog monitor accuracy		
Current monitor (0 to 10 V _{out})	4% ± 85 mA	3% ± 10 mA
Temperature coefficient	50 ppm/°C ± 6 mA/°C	100 ppm/°C ± 1 mA/°C
Voltage monitor (0 to 10 V _{out})	0.25% ± 40 mV	0.4% ± 240 mV
Temperature coefficient	50 ppm/°C ± 0.2 mV/°C	70 ppm/°C ± 1.2 mV/°C
Remote sensing	5-VDC maximum between sense and load input	5-VDC maximum between sense and load input
Minimum operating voltage (at full rated current)	2 V (1.2 V typical)	2 V (1.2 V typical)
Programmable short	0.033 Ω (0.020 Ω typical)	0.20 Ω (0.10 Ω typical)
Programmable open (typical)s	20 kΩ	80 kΩ
Drift (over 8-hour interval)		
Current	0.03% ± 10 mA	0.03% ± 15 mA
Voltage	0.01% ± 10 mV	0.01% ± 20 mV
DC isolation voltage	± 240 VDC, between any input and chassis ground	± 240 VDC, between any input and chassis ground
Digital inputs	V _{IL} = 0.9 V _{max} at I _{IL} = -1 mA / V _{IH} = 3.15 V _{min} (pull-up resistor on input)	V _{IL} = 0.9 V _{max} at I _{IL} = -1 mA / V _{IH} = 3.15 V _{min} (pull-up resistor on input)
Digital outputs	V _{OL} = 0.72 V _{max} at I _{OL} = 1 mA / V _{OH} = 4.4 V _{min} at I _{OH} = -20 μA	V _{OL} = 0.72 V _{max} at I _{OL} = 1 mA / V _{OH} = 4.4 V _{min} at I _{OH} = -20 μA

Notes:

1. Operating temperature range is 0° to 55 °C. All specifications apply for 25 °C ± 5 °C, except as noted.
2. Maximum continuous power available is derated linearly from 40 °C to 75% of maximum at 55 °C.
3. DC current accuracy specifications apply 30 seconds after input is applied.

Supplemental characteristics for all model numbers

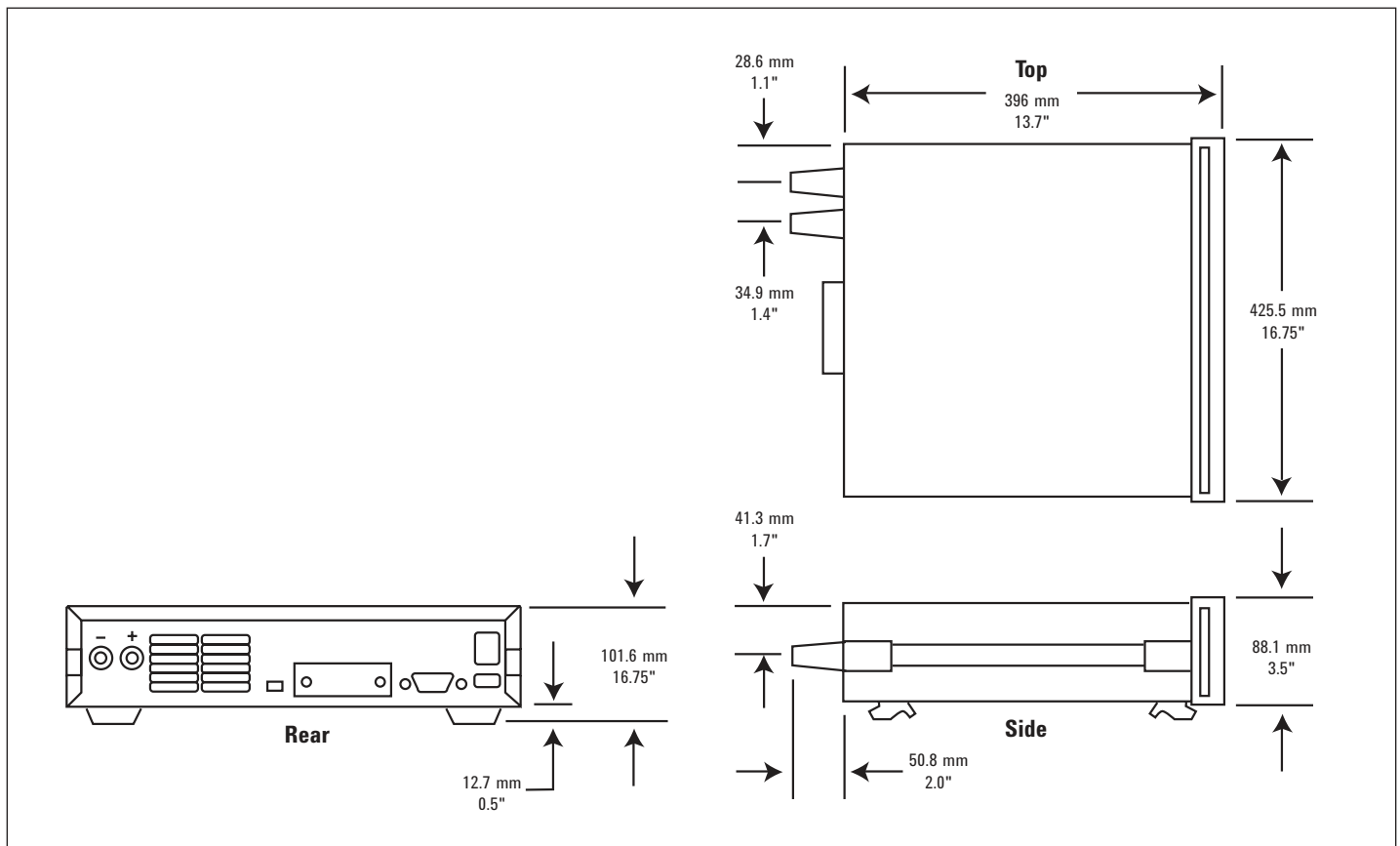
Software driver: VXIplug&play

Size: 425.5 mm W x 88.1 mm H x 396 mm D
(16.75 in x 3.5 in x 13.7 in)

Weight: 6.12 kg (13.5 lb) net; 8.16 kg (18 lb) shipping

Warranty: One year

Keysight Models: 6060B, 6063B



Ordering information

The 6060B and 6063B come with full documentation on CD-ROM. The CD-ROM includes operating manual, programming guide, service manual, and application notes.

- Opt 020 Front panel DC input connectors
- Opt 100 87 to 106 VAC, 47 to 66 Hz input
(for Japan only)
- Opt 120 104-127 VAC, 47 to 66 Hz
- Opt 220 191 to 233 VAC, 47 to 66 Hz input
- Opt 240 209 to 250 VAC, 47 to 66 Hz input

- Opt 0L1 Printed operating manual and programming guide
- Opt 0B3 Printed service manual

Accessories

- 1CM002A* Rack mount flange kit 88.1 mm H (2U) – two flange brackets; 1.75 Inch hole spacing
- 1CP001A* Rack mount flange and handle kit 88.1 mm H (2U) – two brackets and front handles
- E3663AC Support rails for Keysight rack cabinets

Application notes

Keysight AN 372-1 Power Supply Testing, 5952-4190

Keysight AN 372-2 Battery Testing, 5952-4191

Pulsed Characterization of Power Semiconductors Using Electronic Loads (AN 1246) 5091-7636E

*Support rails required

myKeysight

myKeysight

www.keysight.com/find/mykeysight

A personalized view into the information most relevant to you.

Keysight Assurance Plans

www.keysight.com/find/AssurancePlans

Up to five years of protection and no budgetary surprises to ensure your instruments are operating to specification so you can rely on accurate measurements.

www.keysight.com/quality

Keysight Technologies, Inc.

DEKRA Certified ISO 9001:2008

Quality Management System

Keysight Channel Partners

www.keysight.com/find/channelpartners

Get the best of both worlds: Keysight's measurement expertise and product breadth, combined with channel partner convenience.

www.keysight.com/find/6060



For more information on Keysight Technologies' products, applications or services, please contact your local Keysight office. The complete list is available at: www.keysight.com/find/contactus

Americas

Canada	(877) 894 4414
Brazil	55 11 3351 7010
Mexico	001 800 254 2440
United States	(800) 829 4444

Asia Pacific

Australia	1 800 629 485
China	800 810 0189
Hong Kong	800 938 693
India	1 800 112 929
Japan	0120 (421) 345
Korea	080 769 0800
Malaysia	1 800 888 848
Singapore	1 800 375 8100
Taiwan	0800 047 866
Other AP Countries	(65) 6375 8100

Europe & Middle East

Austria	0800 001122
Belgium	0800 58580
Finland	0800 523252
France	0805 980333
Germany	0800 6270999
Ireland	1800 832700
Israel	1 809 343051
Italy	800 599100
Luxembourg	+32 800 58580
Netherlands	0800 0233200
Russia	8800 5009286
Spain	0800 000154
Sweden	0200 882255
Switzerland	0800 805353
	Opt. 1 (DE)
	Opt. 2 (FR)
	Opt. 3 (IT)
United Kingdom	0800 0260637

For other unlisted countries:
www.keysight.com/find/contactus
(BP-07-01-14)